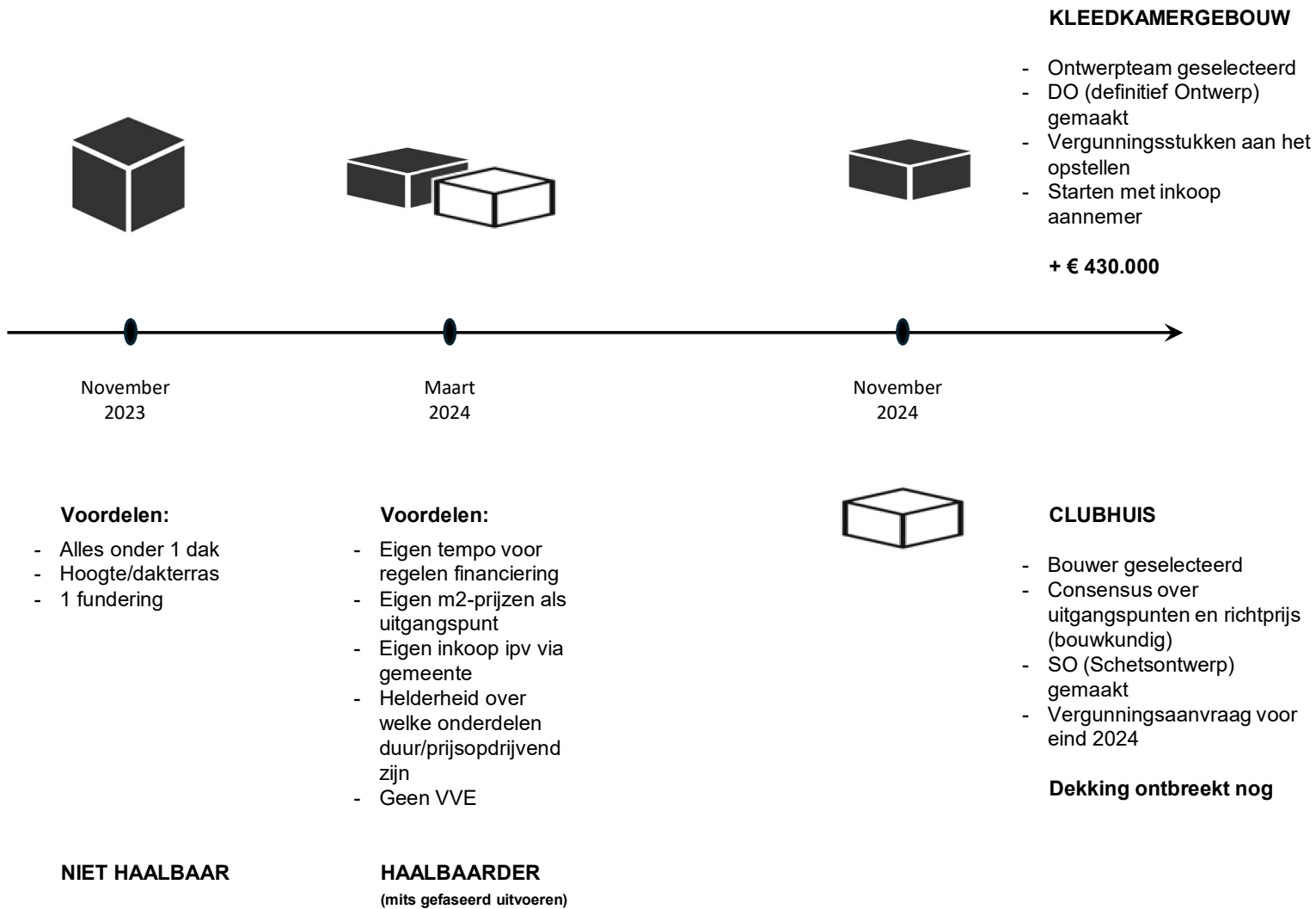
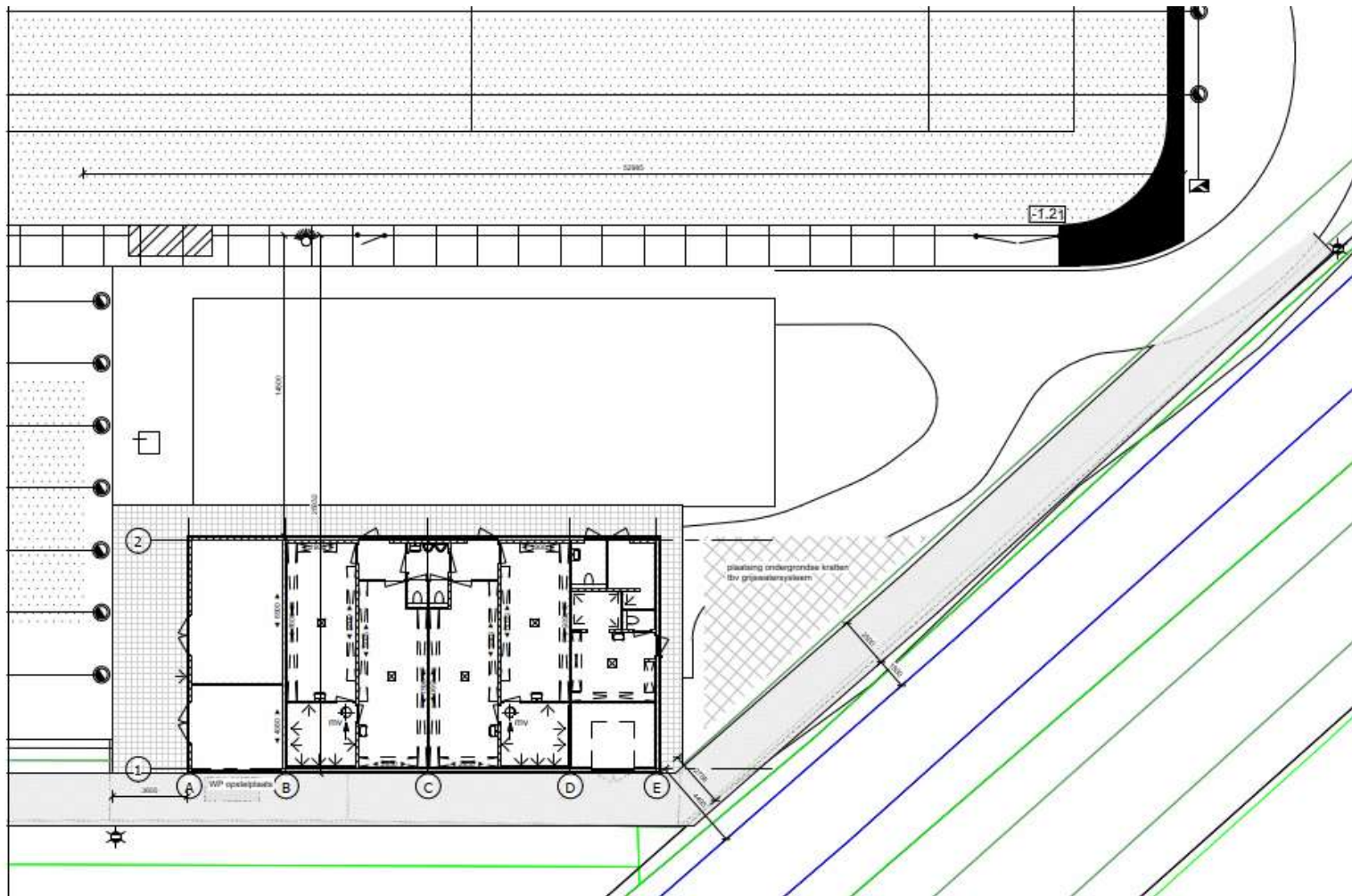


CLUBHUIS

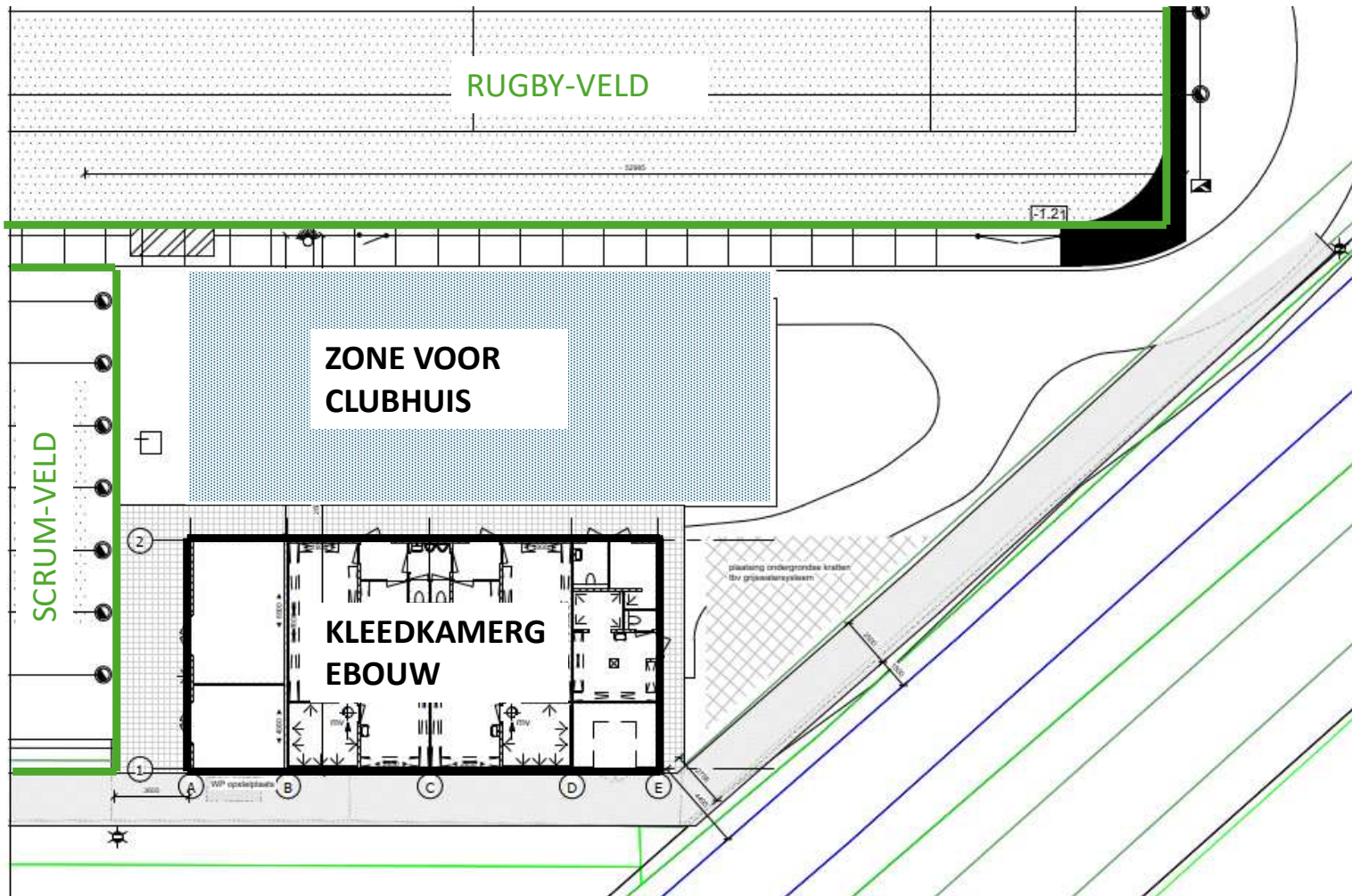
stand van zaken 05-11-2025



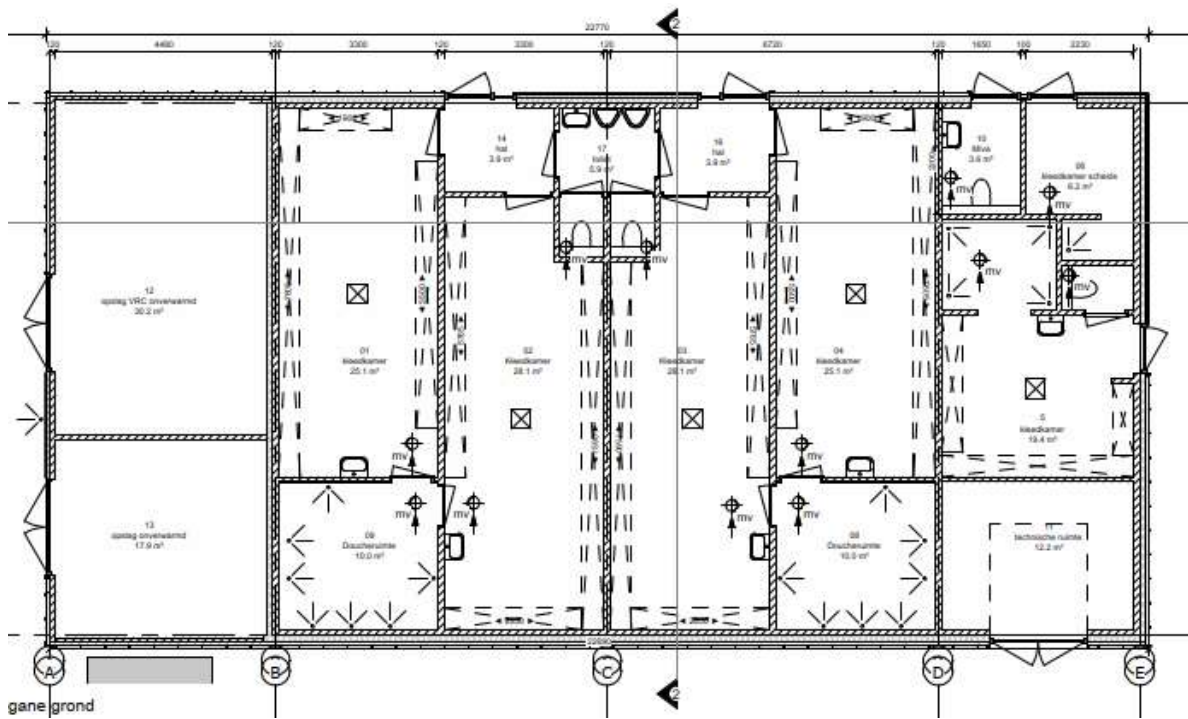




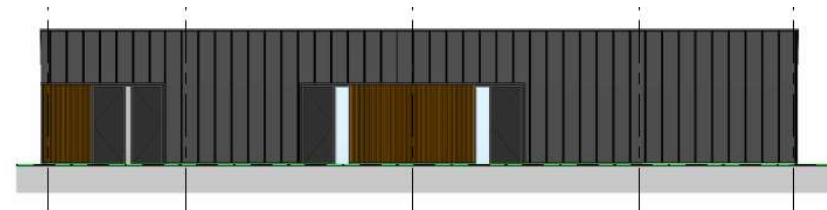
SITUATIETEKENING



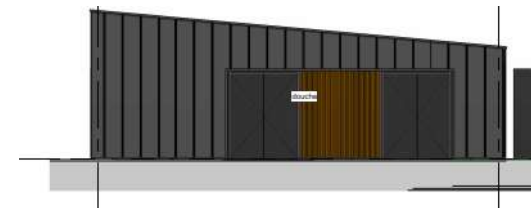
SITUATIETEKENING



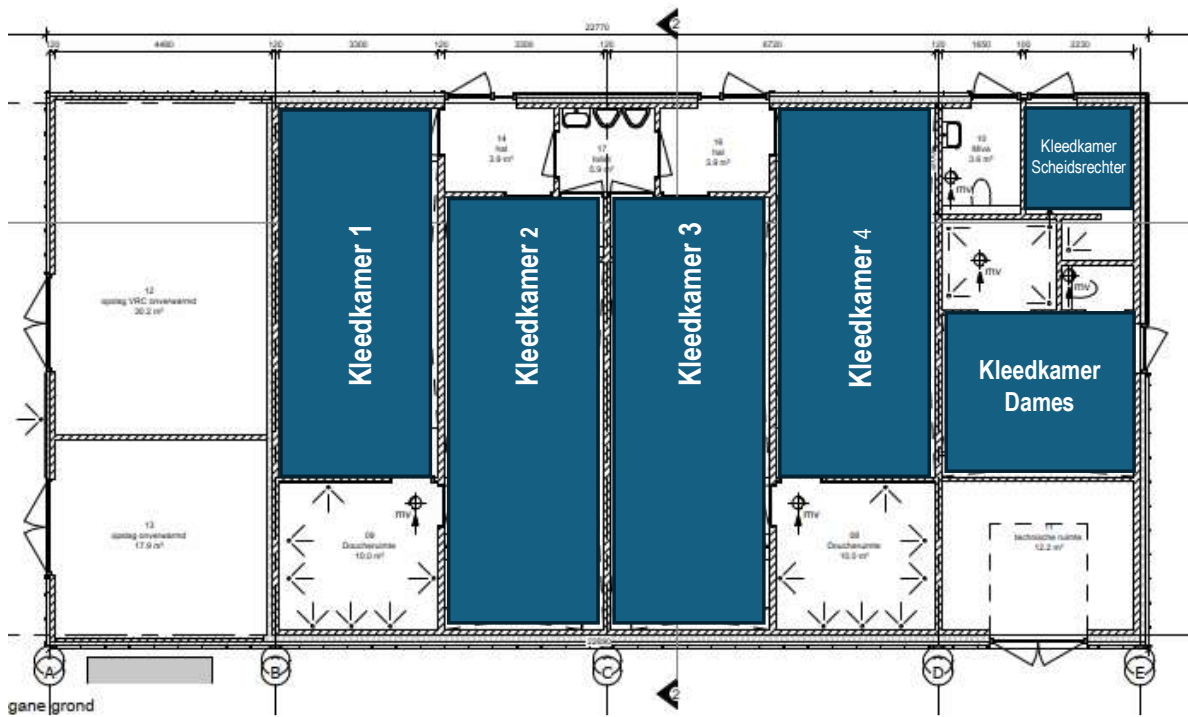
- | | |
|--------------|-------------|
| Kleedkamer 1 | 24 personen |
| Kleedkamer 2 | 22 personen |
| Kleedkamer 3 | 22 personen |
| Kleedkamer 4 | 24 personen |



aanzicht vanuit gang



aanzicht
aanzicht
vanaf scrum-veld

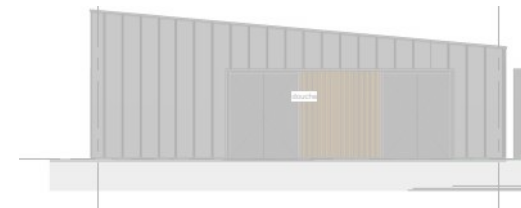


Kleedkamers

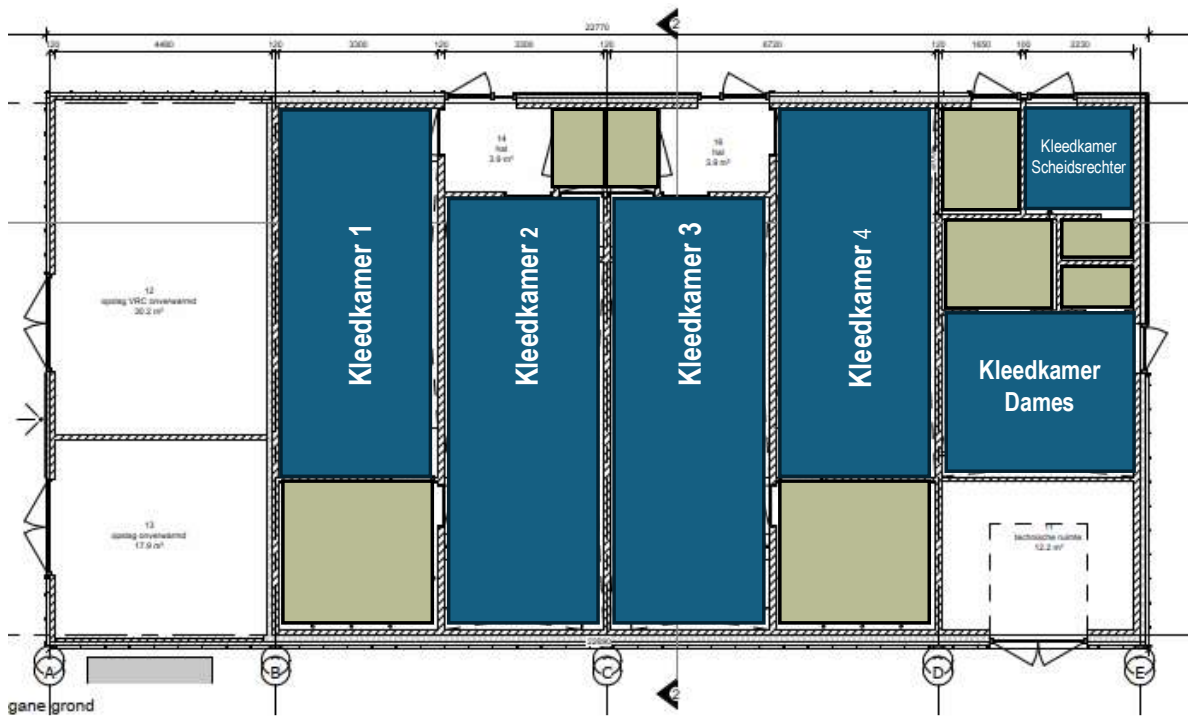
- | | |
|--------------|-------------|
| Kleedkamer 1 | 24 personen |
| Kleedkamer 2 | 22 personen |
| Kleedkamer 3 | 22 personen |
| Kleedkamer 4 | 24 personen |



aanzicht vanuit gang

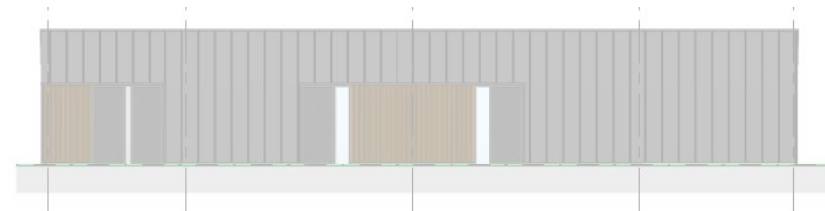
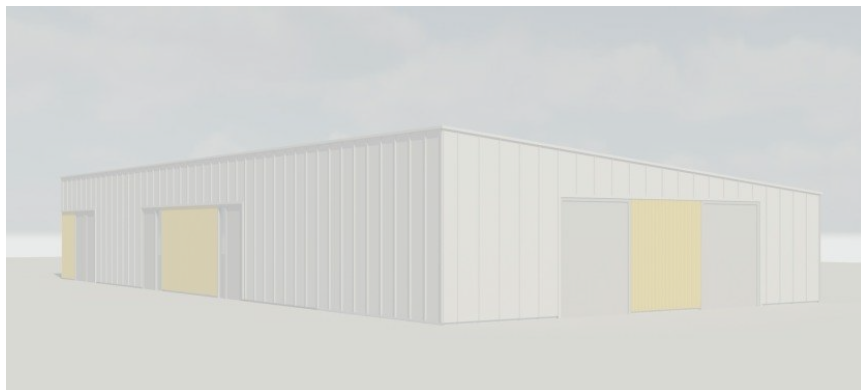


aanzicht
aanzicht
vanaf scrum-veld

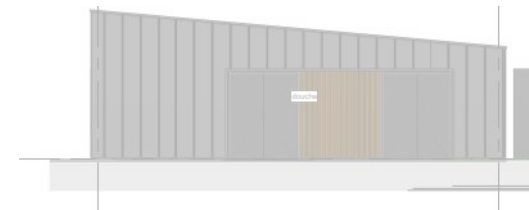


- Kleedkamers
- Douches & toiletten

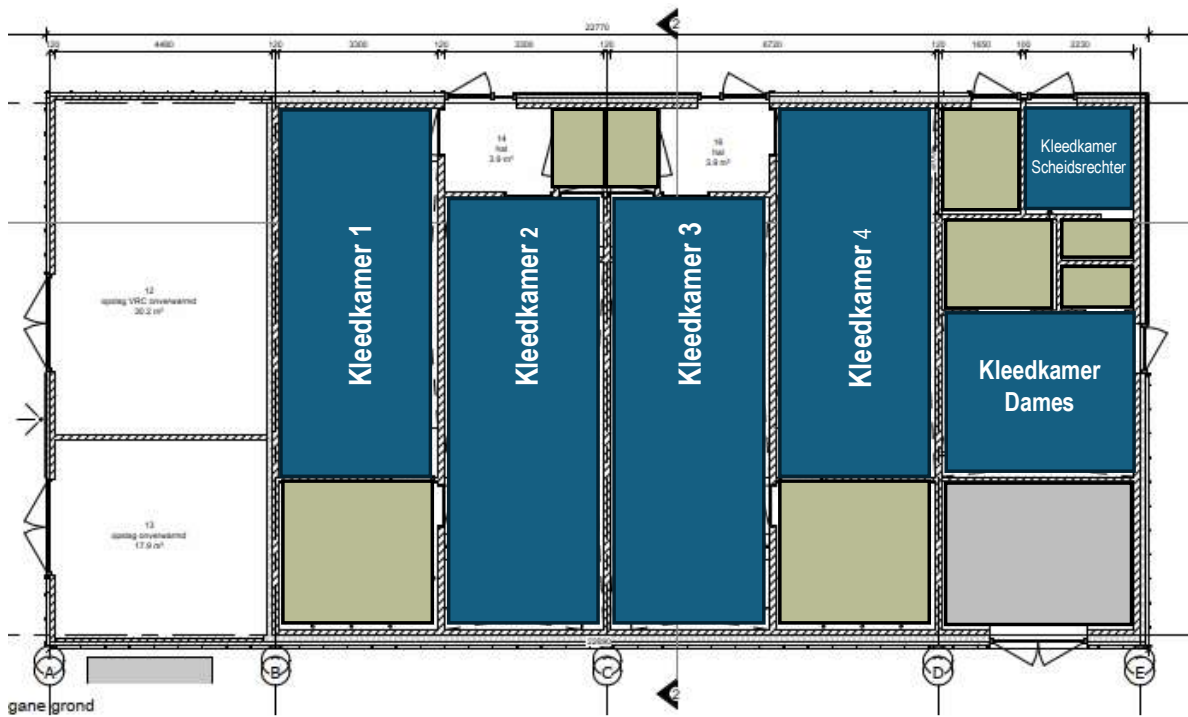
Kleedkamer 1	24 personen
Kleedkamer 2	22 personen
Kleedkamer 3	22 personen
Kleedkamer 4	24 personen



aanzicht vanuit gang



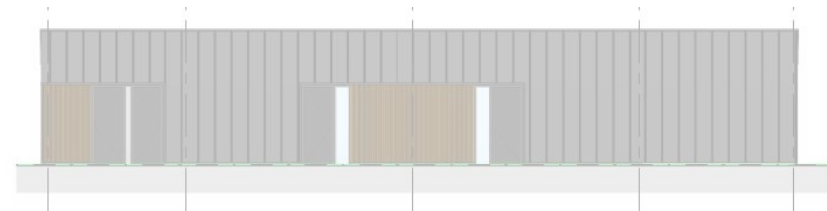
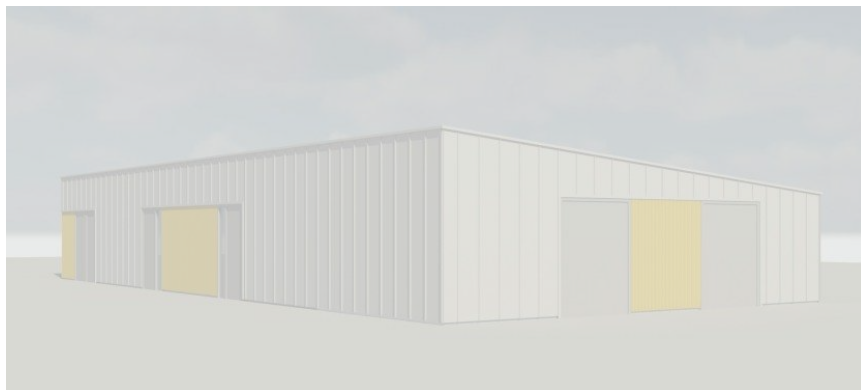
aanzicht
aanzicht
vanaf scrum-veld



- Kleedkamers
- Douches & toiletten
- Techniekrimte

Kleedkamer 1	24 personen
Kleedkamer 2	22 personen
Kleedkamer 3	22 personen
Kleedkamer 4	24 personen

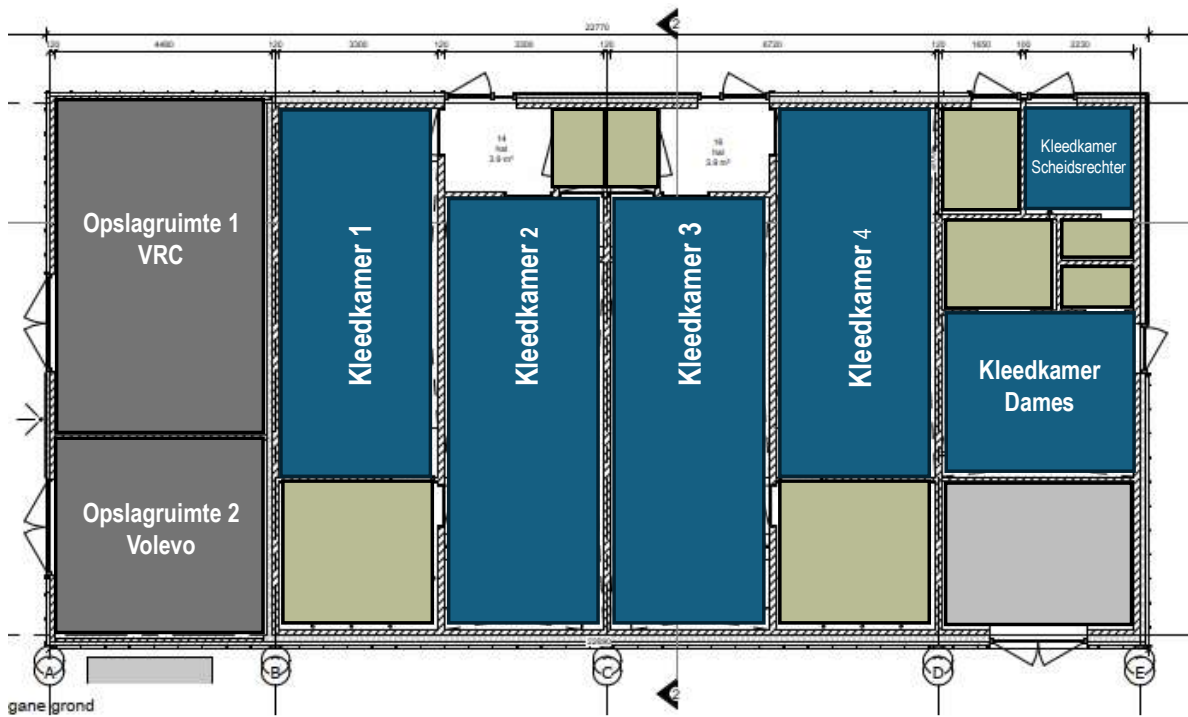
gane grond



aanzicht vanuit gang



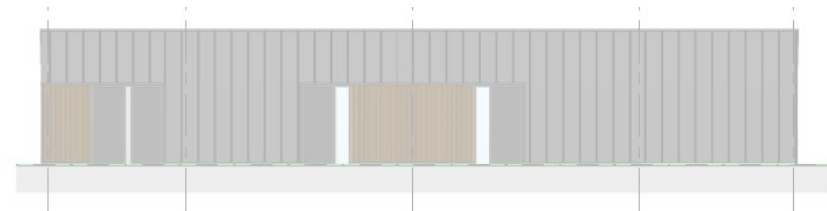
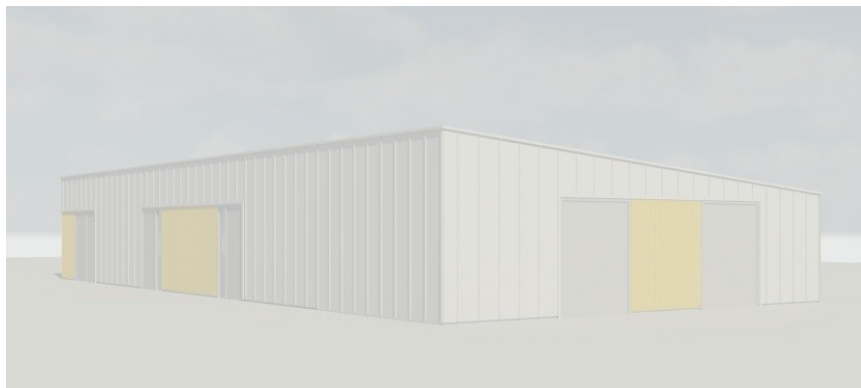
aanzicht
aanzicht
vanaf scrum-veld



- Kleedkamers
- Douches & toiletten
- Techniekruimte
- Opslagruimten

Opslag VRC 30 m2
 Opslag Volevo 18 m2

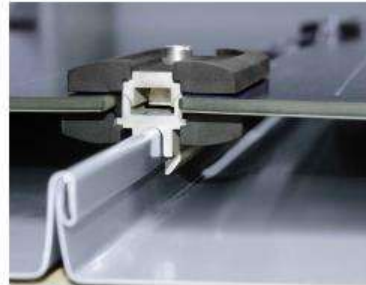
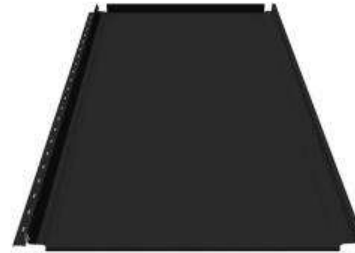
Kleedkamer 1 24 personen
 Kleedkamer 2 22 personen
 Kleedkamer 3 22 personen
 Kleedkamer 4 24 personen

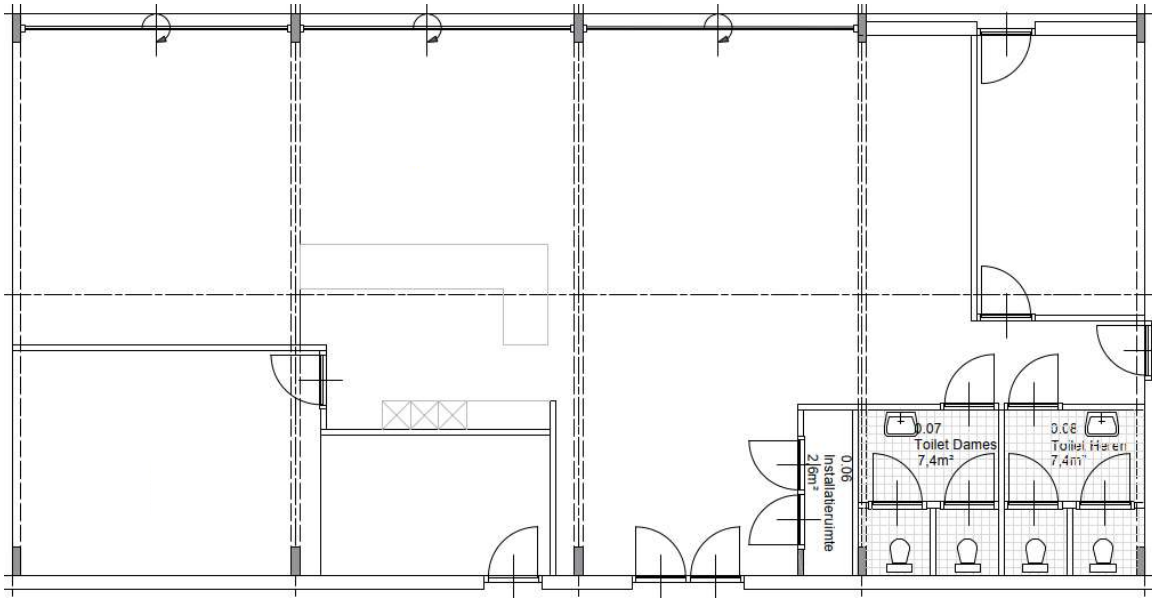


aanzicht vanuit gang

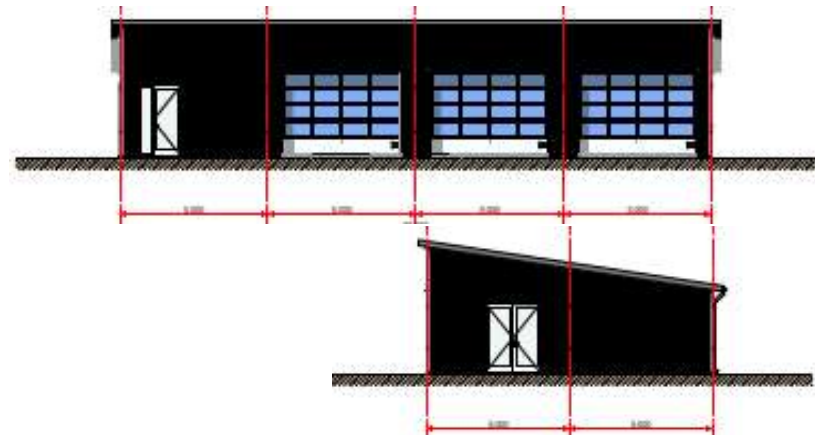


aanzicht vanuit scrum-veld



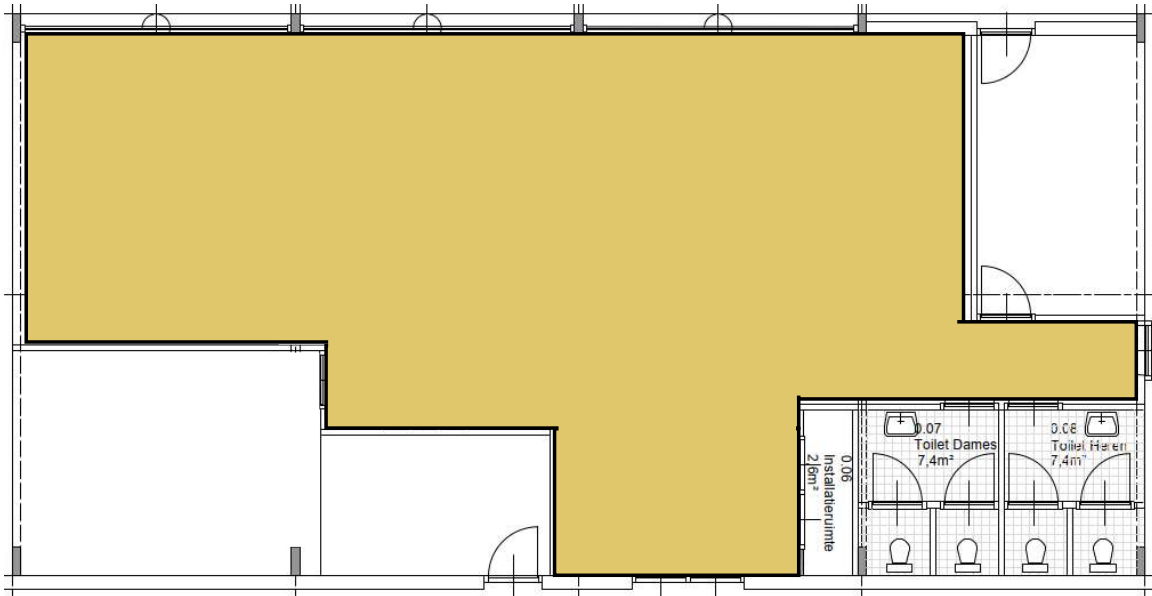


Kantine	ca. 120 m2
Keuken	ca. 20 m2
EHBO	ca. 15 m2
Bijkeuken	ca. 10 m2
Toiletten	ca. 15 m2



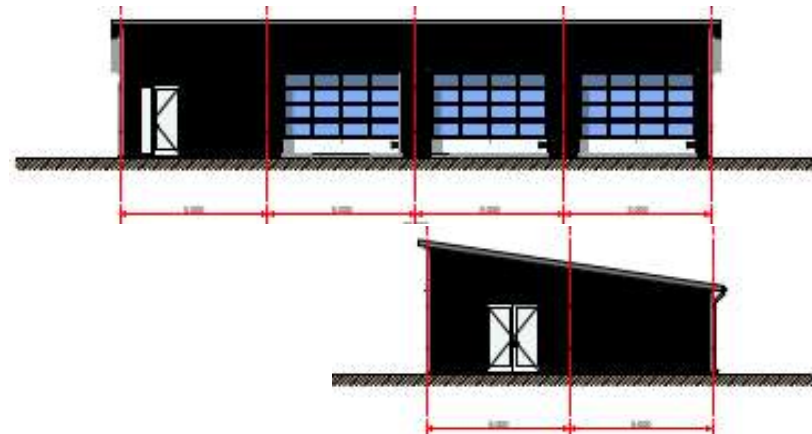
aanzicht vanaf veld

aanzicht aanzicht
vanaf scrum-veld



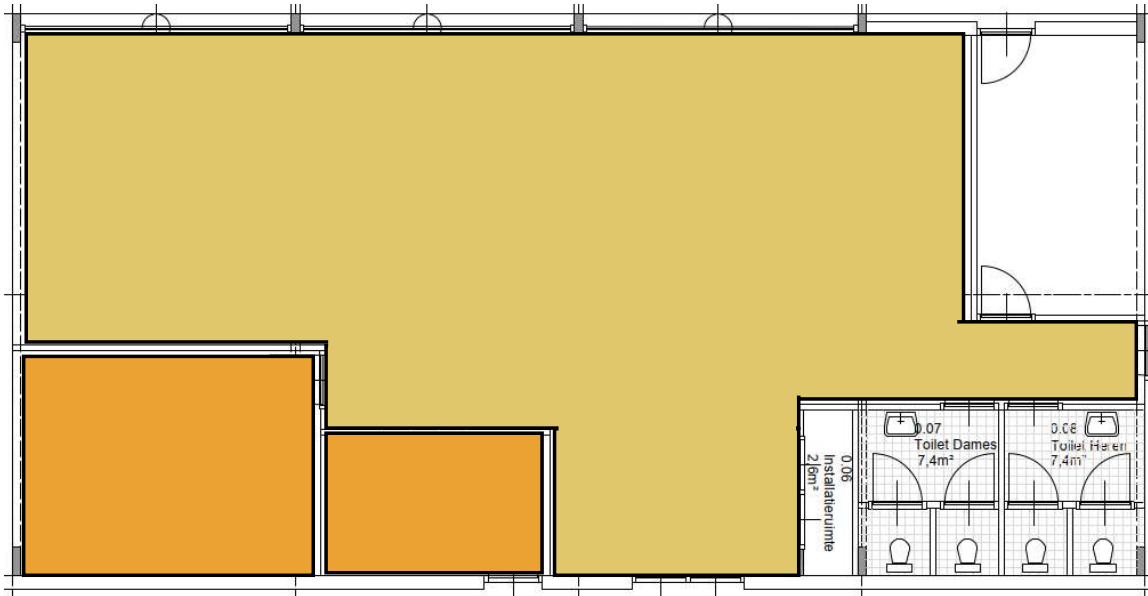
■ Kantine

Kantine	ca. 120 m ²
Keuken	ca. 20 m ²
EHBO	ca. 15 m ²
Bijkeuken	ca. 10 m ²
Toiletten	ca. 15 m ²



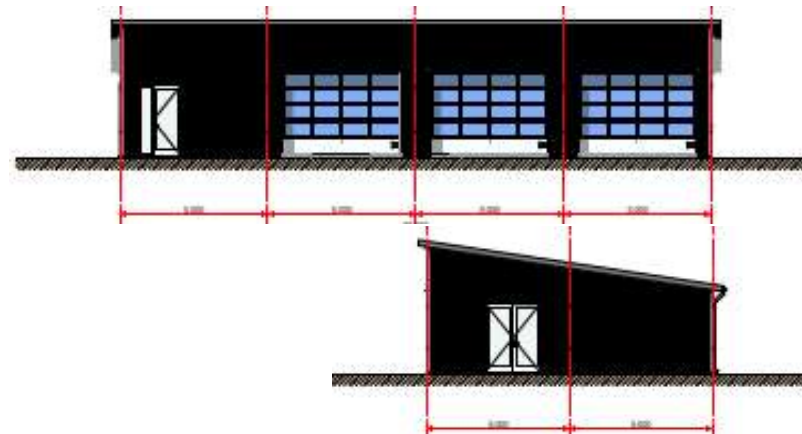
aanzicht vanaf veld

aanzicht aanzicht
vanaf scrum-veld



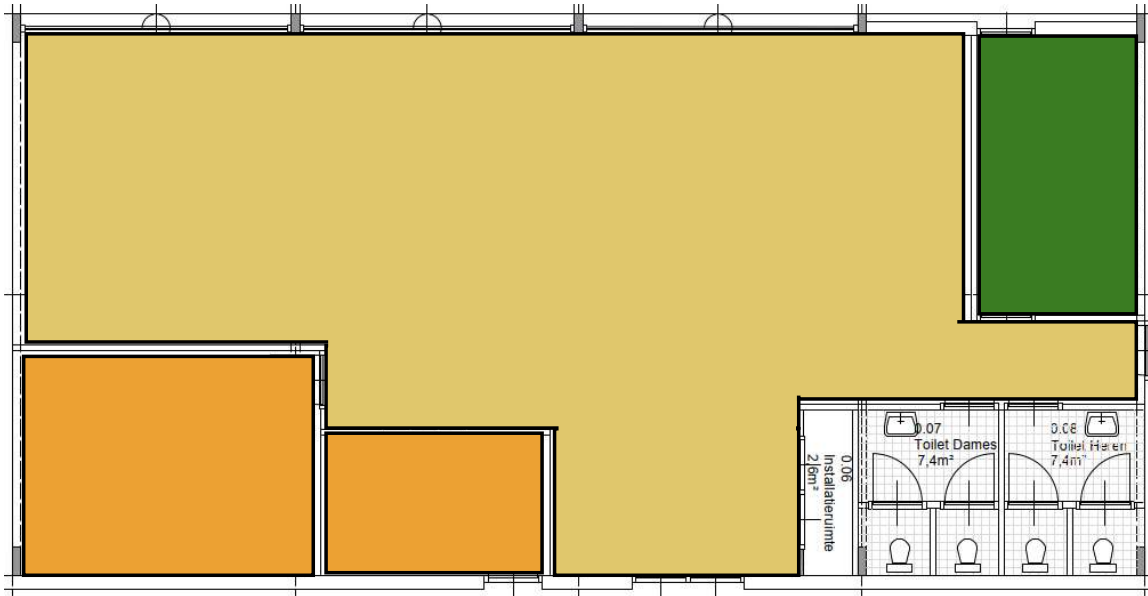
- Kantine
- Keuken en bijkeuken

Kantine	ca. 120 m ²
Keuken	ca. 20 m ²
EHBO	ca. 15 m ²
Bijkeuken	ca. 10 m ²
Toiletten	ca. 15 m ²



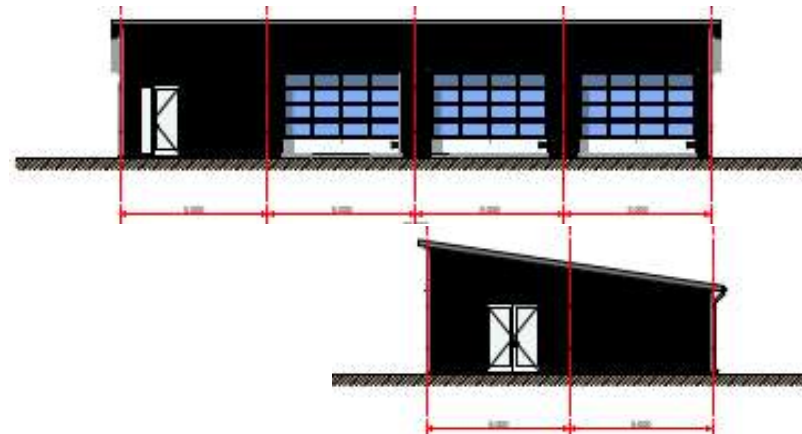
aanzicht vanaf veld

aanzicht
aanzicht
vanaf scrum-veld



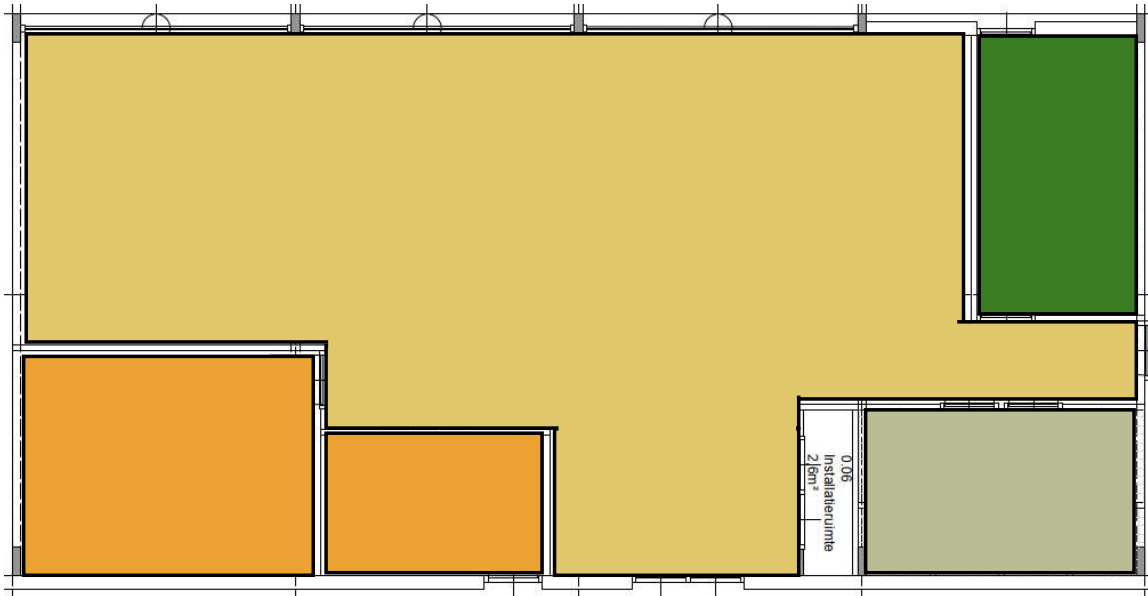
- Kantine
- Keuken en bijkeuken
- EHBO-ruimte

Kantine	ca. 120 m ²
Keuken	ca. 20 m ²
EHBO	ca. 15 m ²
Bijkeuken	ca. 10 m ²
Toiletten	ca. 15 m ²



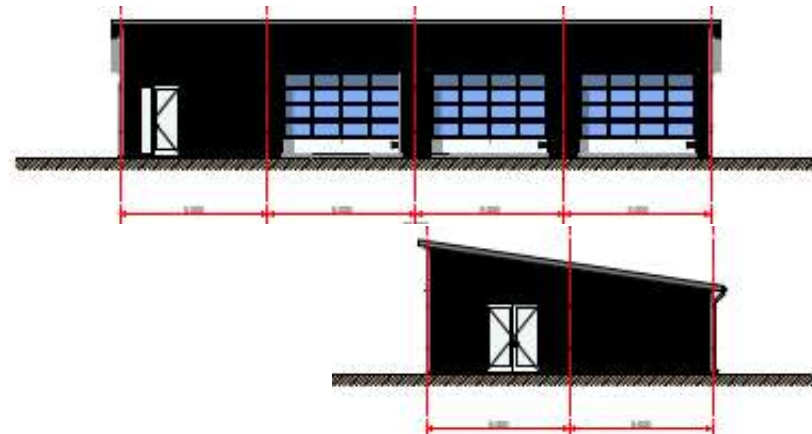
aanzicht vanaf veld

aanzicht aanzicht
vanaf scrum-veld



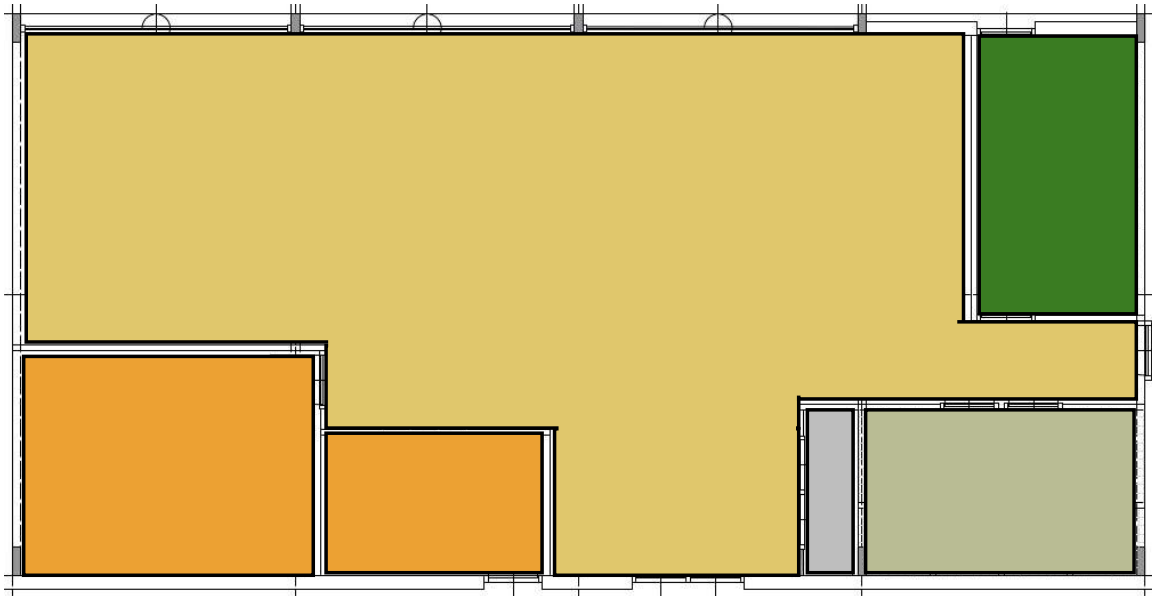
- Kantine
- Keuken en bijkeuken
- EHBO-ruimte
- Toiletten

Kantine	ca. 120 m ²
Keuken	ca. 20 m ²
EHBO	ca. 15 m ²
Bijkeuken	ca. 10 m ²
Toiletten	ca. 15 m ²



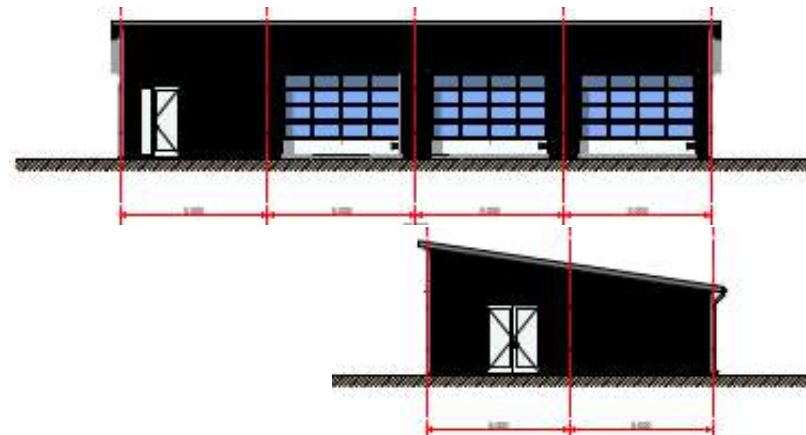
aanzicht vanaf veld

aanzicht aanzicht
vanaf scrum-veld



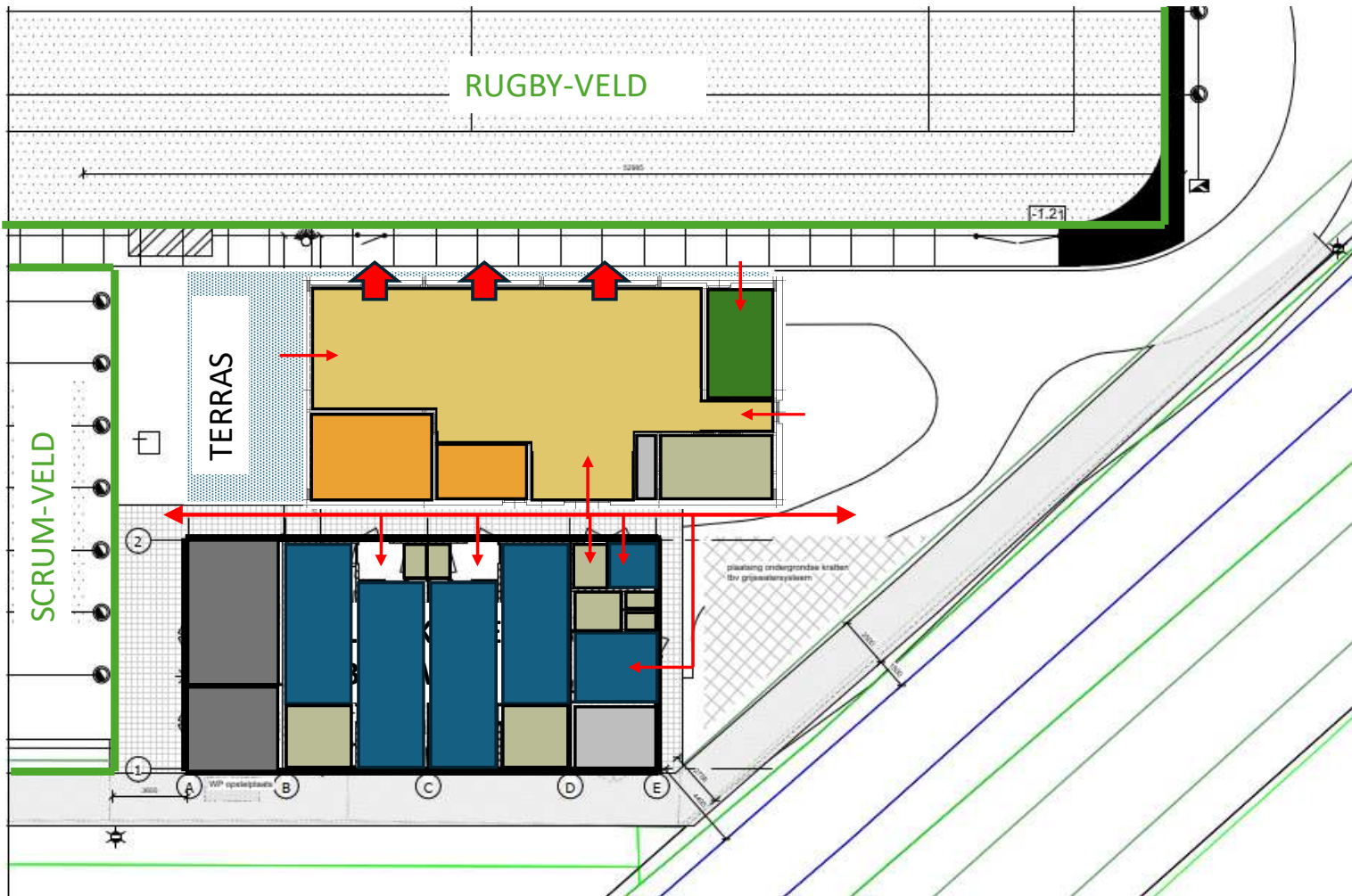
- Kantine
- Keuken en bijkeuken
- EHBO-ruimte
- Toiletten
- Techniekruiimte

Kantine	ca. 120 m2
Keuken	ca. 20 m2
EHBO	ca. 15 m2
Bijkeuken	ca. 10 m2
Toiletten	ca. 15 m2



aanzicht vanaf veld

aanzicht aanzicht
vanaf scrum-veld



SITUATIETEKENING